

Love On The Sudan

(piano)

Billy Harper

♩ = 132 A C-11

$A^b\Delta^{13\#11}$

C-11 C-11/B b

$A^b\Delta^{13\#11}$ N.C.

B F-11 $B^b9_{sus^4}$ F-6(11)

F-6(11) $B^b9_{sus^4}$ F-11

F-11 $B^b9_{sus^4}$ A7(#11) $A^b\Delta^7$

$A^b\Delta^7$ A^b13 G+7(#9)

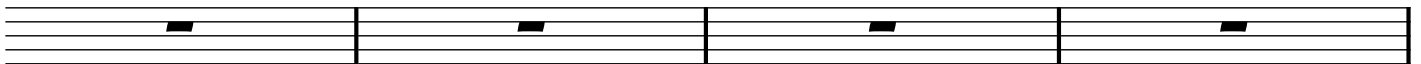
²
C **C-(add9)**

A^b-(add9)



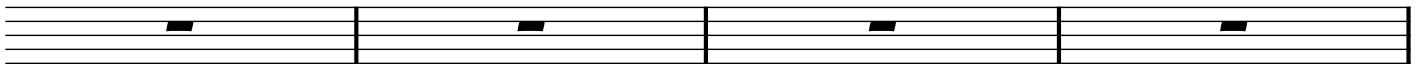
C-(add9)

A^b-(add9)



F-11

F[#]-(add9)

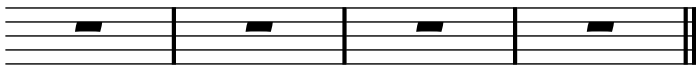


A^b-(add9)

A^b-11

F-11

G+7(#9)



D.C.